



Castine Historical Society

ANNUAL  
REPORT  
**2022**



# Looking Into the Future

Strategic Plans – yes, they sound dry and boring, but not only are they necessary for the ongoing growth and professional development of non-profits like the Historical Society, they are the key document that guides planning.

It was with some trepidation that, in January of 2022, the Board and staff launched into a five-month project to create a new plan to guide us through the next three years. We say “trepidation” only because we knew 2022 was going to be a monumental year for the Historical Society.

We welcomed two new staff members, Jules Thomson as Collections Manager and Mary Caron Durost as Office Manager. Naturally, bringing two new staff members on board takes time and training. Happily, both Jules and Mary settled in quickly and are providing new energy, ideas, and skills to CHS.

In January, we were in the midst of organizing a brand-new exhibition, which is never a small undertaking. Staff and volunteers were knee-deep in editing labels and interpretive panels, sending out loan forms, organizing sculpture delivery, and in general handling a myriad of details related to opening the exhibition in early June.

And, of course, we were also in the middle of planning and executing the Castine House & Garden Tour, our largest event we hold every 4 or 5 years. The staff was working on a variety of projects for the event, including marketing, advertising, and overseeing printing. Office work skyrocketed with the handling of online ticket sales of over 600 pre-sold tickets!

This was a lot of work to be doing during the first half of the year, but, thanks to the help of the Strategic Plan Committee and our incredible Board of Directors, we finished the Strategic Plan in early June and debuted a revised Mission Statement and a brand-new Vision Statement and Values.

Throughout this Annual Report, you will learn more about the plan and see how we are already meeting its goals while staying focused on our mission, vision, and values. It's a truly exciting time to be part of the Castine Historical Society!

We hope that you, our members, not only feel this excitement but will help us fulfill our goals in any way you can, from your financial support, to serving on committees or volunteering for short-term events, to providing your feedback. This is **your** Historical Society, and together we can meet our new mission to make the Castine Historical Society accessible, relevant, and inspiring to all.



Lisa Simpson Lutts  
Executive Director



Susan Hatch  
President, Board of Directors

# Annual Report 2022

## 2022-2023 BOARD OF DIRECTORS

Susan Hatch  
*President*

Howard Lowell  
*Vice President*

Lisa Haugen  
*Secretary*

John Mitchell  
*Treasurer*

Alice Alston  
Richard M. Ames  
Ellen Benjamin  
Roberta Boczkiewicz  
Mary Dearborn  
Brittany Goetting  
Kelly Gualtieri  
Karen Lyons  
Charlie Pearce  
Marc Pelletier  
Brooke Tenney

## 2021-2022 BOARD MEMBERS

William Buchanan  
George Hatch

## HONORARY DIRECTORS

James M. Day  
*President Emeritus*  
David K. Adams  
Lynne Dearborn  
Sara F. Foote  
Jack Macdonald  
Marcia Mason  
Ann L. Miller  
John C. Parish, Jr.  
Robert B. Rettig  
Ruth Scheer

## STAFF

Lisa Simpson Lutts  
*Executive Director*  
Jules Thomson  
*Collections Manager*  
Mary Caron Durost  
*Office Manager*

## *Thank you* TO OUR VOLUNTEERS:

Carol Adams and Rick Armstrong	Jan and Will Fisher	Beth Murnaghan
Susan Adam	Judy and Doug Fitzsimmons	Debby Neve
Lela Agnew	Verge Forbes	Kate Noel
Alice and Wallace Alston	Sam Friedlander	Peggy O'Neil-Murphy
Winston Alt	Anne and Roland Fuentes	Diana Paine
Richard Ames	Wendy Fullenweider	Liz and John Parish
Helen Anderson	Mickey Gast	Bev Parsons
Tina and Bill Anthony	Linda Genereux	Greer and Charlie Pearce
Carolyn and Morten Arntzen	and Timur Galen	Jean Pedersen
Gracen Ashton	Brittany Goetting	Peter Pincoffs
Linda Austin	Lana Gold and Holly Perry	Ellyn Plato and John Boyer
Lynn and Jeb Baker	Anne Gorman	Pam Pollack and Gene Fignar
Mary Bartlett	Barbara Grover	Joy Pott
Margaret Beckman	Kelly Gualtieri	Gretchen Raber
Ellie and Doug Benjamin	Mary Rappazzo Hall	Debbie Rogers
Sandra Beske	Charles Hart	Patty Rappazzo
Gene Bland	Anne and Mark Hatch	Diane Salter
Hilary Bland	Susie and David Hatch	Jane Saltsman
Janis Bobb	George Hatch	Liz and Darin Schanker
Posey and Bill Boicourt	Lisa and Patrick Haugen	Ruth and Ken Scheer
Roberta Boczkiewicz	Kay Hightower	Jeryl Schriever
Beth Boucher	Mason Hoeller	and Alex Huppé
Kathleen Bower	Laura Hopkins	Lindsay Scott
Bill Bowick	Julie Jeffrey	Charlotte Scott
Dona Brophy	Leah Keating	Mimi Scott
Cynthia Boyer	Susan Kennedy	Janet and Jim Shanley
Lynn Brown	Gunilla Kettis	Steve Skillen
Bob Bruce	Charlie King	Chris Soper
Emerson Bruns and Nik Quaife	Mary Kneisel	Robin Stafford
Marianne and Bill Buchanan	Karen and Doug Koos	Karen Stanley
Laurie Butler	Lisa Lawsing	Richard Stern
Penny Carlhian	Vicky Lee	Meredith Stuart-Smith
and Marc Pelletier	Marianne Lee	Johanna and Pedrick Sweet
Taylor Carta	and Wyllys Terry	Meg and Dick Taylor
Betsy Casteen	Charlotte Alston Legg	Brooke and Gil Tenney
Sandy Clark and Ned Odegaard	Gayle and Jeff Lewis	Catherine Tenney
Susanne and Ben Clark	Jennifer Lieberman	Marty and Don Tenney
Barbara Cooper	Tommy Lieberman	Peter Tenney
Bill Corbett	Steve Lieser	Steven Tenney
Ceane and Bryan Corbett	Sue Loomis	Loi Thai and Tom Troeschel
Russell Corbett	Howard Lowell	Penny Tonry
Mike Coughlin	Laurie Lyman	Heather Trainor
Claire Curtin	Karen Lyons	Melanie Twomey
Leila and Jim Day	Mary Claire and Dan Mari	Bobby Vagt
Patty Day	Flora Marvin	Betty Venson
Jill and James Dearborn	Marcia Mason	Judith Wardwell
Lynne Dearborn	Dabney McKenzie	Betsy Wagner
Mary Dearborn	Susie McNair	Anne Warren
Jean di Sabatino	Hope McNally	Anne Whidden
and Louise Giugliano	Neil Middleton	Mary Wilson
Kate Dustin	Beth Miller	Gail Winkler and Roger Moss
Jill Eastman	Maggie and John Mitchell	Pat Winter
Kathy Eaton	Tom Mitchell	Charleen Wiseman
Susan Farmer	Diane and David Modesett	Sheila and Andy Yorken
Ewen Farnham	Danielle Morgioni	Stefanie Scheer Young
Betsy and Joe Fay	Brockett Muir	and Andrew Young
Angela Fisher	Hollis Muir	Georgia Zildjian
	Nancy Mundth	Pat and John Zoller

## Governance

**Value** | We promote the highest standard of excellence in everything we do.

**The Governance Committee is charged with improving board effectiveness and ensures that CHS's bylaws, policies, and procedures follow best practices in the museum field while reinforcing the organization's mission and values.**



Susie Hatch



Brittany Goetting



Charlie Pearce

This year was a busy one for the Governance Committee. A key role of the committee is to nominate new board members and celebrate those who are retiring. During the August Annual Meeting, the following people were nominated and then elected to the board: Susie Hatch, Brittany Goetting, and Charlie Pearce. The following people were elected to serve a second term on the board: Richard Ames, Mary Dearborn, and Howard Lowell.

At the Annual Meeting, we also thanked two retiring board members who made significant differences to CHS during their tenures. Bill Buchanan, who also served as a member of the Finance Committee, brought his vast experience in the investment world to CHS. We are grateful for the expertise he shared to help us oversee the endowment and monitor our finances. We are also pleased he has agreed to continue to serve on the Finance Committee despite stepping down from the board.

During George Hatch's board tenure, he served in several key leadership roles. In 2017, George chaired the Strategic Plan Committee. Following this, he ably chaired the Governance Committee until he became President of the Board in 2021. George has a deep understanding of and experience in non-profit service, and he brought that understanding to the board. He is a thoughtful and strategic leader who provided stellar leadership to CHS. George will continue to serve on the Strategic Plan Implementation Committee.

### GOVERNANCE Committee Members

Ellen Benjamin, *chair*  
Mary Dearborn  
George Hatch  
*through August, 2021*  
Howard Lowell  
Brooke Tenney  
Lisa Simpson Lutts, *staff*  
Susie Hatch, *ex officio*

Over the years, the Governance Committee has tackled many projects and policies to help move CHS forward as an organization. This year the committee spearheaded the creation of a new three-year strategic plan. To guide us through the plan, the board hired Starboard Leadership Consulting of Bangor. The choice was easy because they led us through



President George Hatch chairing the 2022 Annual Meeting

developing our 2017 Strategic Plan, and over the past six years they have conducted our Executive Director search, led staff development workshops, and provided Executive Director coaching. They know our organization well, and the board felt confident they would continue to provide excellent consulting services. They did not prove us wrong.

We commenced the planning process in January, and immediately began including stakeholders in the process, including staff, Board of Directors, volunteers, and honorary trustees. CHS staff and board used this information to reexamine and rewrite our mission statement and create a vision statement and a set of values to guide CHS in the coming years.

Our mission statement is the beating heart of CHS—and of every other historical society—because it provides the aspirational framework for every project CHS undertakes. The strategic plan specifies how and when we intend to achieve this mission.

After a day-long board-and-staff retreat, the committee fleshed out the three-year strategic plan. Three years may not seem traditional for a strategic plan, but in this fast and ever-changing world, three years gives CHS a living document that is nimble, realistic, and achievable.

The Board approved the strategic plan in June. Both our staff and board committees are already using it as a guidepost for creating 2023 work plans. While CHS strives to meet the goals of expanding access, embracing diversity, and demonstrating excellence, the staff and board pledge to keep you informed and involved as the organization continues to grow and develop as a world-class historical society.



At the CHS Annual Meeting members voted on the slate of new board members, listened to committee reports, and enjoyed a guest speaker. Since COVID, all members, no matter where they live, have the ability to vote through the mail.



## Mission

We make Castine history accessible, relevant, and inspiring to all.



## Vision

The Castine Historical Society cultivates curiosity about our past to foster a more inclusive, empathetic, and informed society. Inside and outside our walls, we build relationships among individuals, organizations, and the community to enhance understanding of our collective experiences.

## Values

### Provide Access

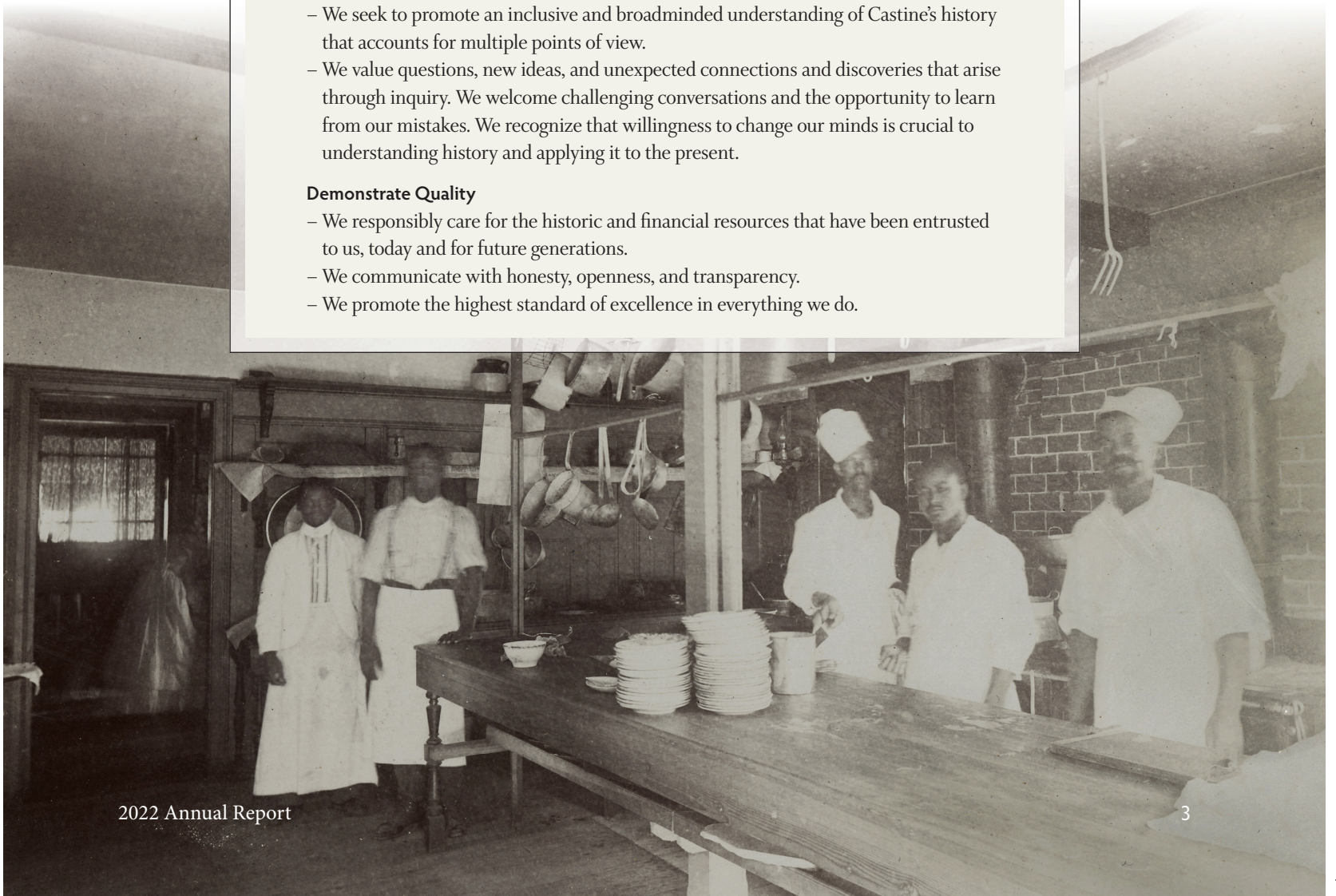
- We are a community gathering space, resource, and catalyst for civic engagement that is rooted in the understanding of Castine's history and its impact on our lives today.
- Through our collections, exhibitions, and programs we work to ensure all people can experience the power of history.

### Embrace Diversity

- We strive to embrace diversity in all aspects of our institutional culture and programming.
- We seek to promote an inclusive and broadminded understanding of Castine's history that accounts for multiple points of view.
- We value questions, new ideas, and unexpected connections and discoveries that arise through inquiry. We welcome challenging conversations and the opportunity to learn from our mistakes. We recognize that willingness to change our minds is crucial to understanding history and applying it to the present.

### Demonstrate Quality

- We responsibly care for the historic and financial resources that have been entrusted to us, today and for future generations.
- We communicate with honesty, openness, and transparency.
- We promote the highest standard of excellence in everything we do.





# Education

**Value** | We seek to promote an inclusive and broadminded understanding of Castine's history that accounts for multiple points of view.

The Education Committee is committed to the newly adopted strategic value in which we ensure that our education programs are inclusive and tell history from multiple points of view. The Education Committee also provides support and advice to staff on the implementation of program activities.

To do this, the committee is charged with recruiting and training exhibit docents and walking tour guides. Two volunteer coordinators oversee these programs with the committee's assistance. Each year, the committee evaluates both programs based on survey responses from participating volunteers.

This season's new exhibit, focusing on the life and work of Clark Fitz-Gerald, created enthusiasm in docents and visitors alike. Exhibit and walking tour attendance was excellent as we returned to our pre-COVID hours.

CHS is known for its interesting and thought-provoking educational programming. This year, the focus of educational programming revolved around the exhibition. Stephen Fitz-Gerald, the sculptor's son, and the exhibit's guest curator, Carl Little, both presented excellent talks about the sculptor. In August, we offered a family program led by volunteer Johanna Sweet. Children and adults toured the exhibit, learned about Fitz-Gerald's "Jibbies", visited the shore to collect natural materials, and returned to CHS to make their own tiny sculptures. This was a hit and was repeated in September with the 3rd and 4th graders at the Adams School.



Carl Little giving the Deborah Pulliam Memorial Lecture on Clark Fitz-Gerald.



Johanna Sweet with the Adams School 3rd and 4th graders touring the Clark Fitz-Gerald exhibition.

Teaching history in innovative ways is another focus of the education committee. This year, the committee worked with Heather Trainor, the 3rd and 4th grade teacher at the Adams School, to develop curriculum focused on 19th century occupations and individuals who pursued them in Castine. Committee members and two additional volunteers researched and wrote the curriculum guides for fifteen occupations including, among others: shipbuilders and captains (Samuel Noyes and Henry Whitney), sailors and ships' cooks (Solon Hanson and John Jackson), teachers (Sarah and Abigail Hawes), milliners and shopkeepers (Lucena Parker and William Witherle), and ropemakers (Joseph Surry and John Dresser). The committee looks forward to implementing the curriculum with Ms. Trainor in May and June of 2023.

At the close of 2022, the committee has begun plans for the 2023 season in which CHS will debut an exciting new series of programs on the history of African Americans in Castine and Maine. Stay tuned!



Scene from the volunteer thank you party. We had a record-breaking 200 people volunteer with CHS this year!

## EDUCATION Committee Members

Alice Alston, <i>chair</i>	Georgia Zildjian
Roberta Boczkiewicz	Susie Hatch, <i>ex officio</i>
Kelly Gualtieri	Lisa Simpson Lutts, <i>staff</i>
Jean di Sabatino	Laurie Butler,
Louise Giugliano	<i>tour guide coordinator</i>
Peggy O'Neil-Murphy	Dabney McKenzie,
Peter Tenney	<i>docent coordinator</i>



# Exhibitions

**Value** | Through our collections, exhibitions, and programs we work to ensure all people can experience the power of history.

CHS excels in a number of areas, one of which is well-curated exhibitions that help people experience and learn from local history set within the context of national or even international history. The 2022 exhibition had a somewhat new twist for the Historical Society – it focused on art history. In June, after years of research and planning, CHS debuted *Clark Fitz-Gerald: Castine's Celebrated Sculptor-in-Residence*.

Area residents were sure to enjoy the exhibition, but surprise arose with the excitement visitors from throughout the country displayed when they saw the Fitz-Gerald exhibit. Trip Advisor is always a great gauge of people's reactions. Here are some comments visitors wrote:

*This is an excellent museum. Their exhibit this year was incredible.*

*I especially loved the Clark Fitz-Gerald sculptures and the community quilt.*

*The building itself is charming, the community bicentennial quilt on display is stunning, and the Clark Fitz-Gerald exhibit is a must-see ... what an amazing talent!*

Planning made it clear that an art historian was essential to guest curate the exhibition. In 2020 a Request for Proposal was posted, and the staff and committee alike were thrilled when Carl Little, a noted Maine art historian, expressed an interest in curating the exhibition. Little has a broad and deep knowledge of 20th-century art with an emphasis on Maine's vibrant art scene. He also is a noted writer and recently received the Dorothea and Leo Rabkin Foundation's Lifetime Achievement Award for art writing. His efforts produced an exhibition that is a thought-provoking and insightful history of a sculptor whose impact was local, national, and international. (We say "is" because the exhibition will be extended into 2023, with new sculptures and archival materials on display.)

The sculptures borrowed from lenders were the stars of the show. But the exhibition's impetus came in 2017, when Fitz-Gerald's children, Stephen and Leah Fitz-Gerald, donated Fitz-Gerald's archives to CHS. The collection includes sketchbooks, loose drawings, letters, notes, and historic photographs documenting a lifetime's achievement of the artist from his early days as an art student through his death in 2004. The exhibition displays many of these to accompany the sculptures and document Fitz-Gerald's working methods as an artist.



*This exhibition is funded in part through two grants from the Maine Arts Commission, an independent state agency supported by the National Endowment for the Arts, and an anonymous local donor.*



Views of the Clark Fitz-Gerald exhibition.



It takes many people to create an exhibit. Yvonne Lauzière of Stark Creative, designed the color scheme and exhibition panels that brought the exhibit to life. Banner City Graphics in Bucksport, as always, did an amazing job producing these large-scale interpretive panels and helping to install the more difficult sections. Marc Pelletier, board member and chair of Buildings and Grounds, along with committee members Charlie Pearce and Pedrick Sweet, and volunteer Bill Corbett, built and/or painted seven exhibition cases and a complicated wall panel. And the Exhibitions Committee members, along with staff, carefully installed the exhibit for the early June opening. Creating an exhibition is a team effort, and these team members are proud of their commitment to meet CHS's mission to tell Castine's history in a way that is accessible, relevant, and inspiring to everyone who visits.

## EXHIBITS Committee Members

Brooke Tenney, *chair*  
Penny Carlhian  
Susie Hatch

Marcia Mason  
Don Tenney  
Lisa Simpson Lutts, *staff*



# Collections

## Value

Through our collections, exhibitions, and programs we work to ensure all people can experience the power of history.

2022 was a year of big changes for the Historical Society's curatorial workflow. First, there was a change in both personnel and job titles as Jules Thomson took over from 13-year CHS veteran Paige Lilly. Paige's former job title of Curator was changed to Collections Manager, with an accompanying de-emphasis on exhibit curation to focus more explicitly on management of the collections themselves.

This change has helped with expanding our intellectual control over the Historical Society's collections. It allows staff to spend more time processing and cataloging incoming collections to avoid a buildup of backlogged items, as well as the creation of policies to standardize workflows and ensure compliance with current best practice in museums and archives.



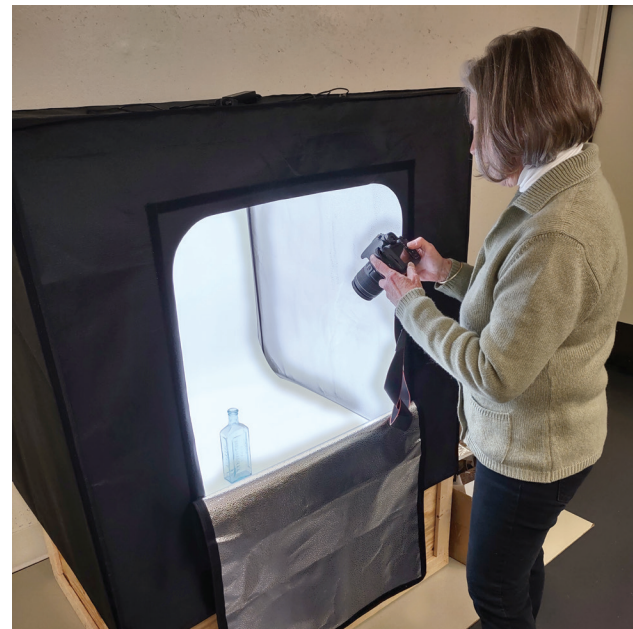
Photographing collections then and now. Baldwin Coolidge photographing the Baron de Saint Castin portrait by Will H. Lowe in 1911. *Castine Historical Society, donated by the Maine Historic Preservation Commission.*

## COLLECTIONS Committee Members

Richard M. Ames, *chair*  
Roberta Boczkiewicz  
Lynne Dearborn  
*through August, 2022*  
Brittany Goetting  
Howard Lowell  
Jules Thomson, *staff lead*  
Lisa Simpson Lutts, *staff*  
Susie Hatch, *ex officio*

In line with CHS's new mission statement and values, we have also redoubled efforts to provide access to our collections. In April we launched our first ever online public access catalog, which mirrors our internal catalog and features over 4,500 collection items for anyone to search by keyword, type, and other categories. The online catalog also showcases the results of the photography digitization project coordinated by Paige with the assistance of interns. Well over 1,000 digitized images are now available for browsing in addition to the standard catalog records. A link to the new catalog can be found under the "Collections" tab on the CHS website.

More collection items than we can fully list here were donated or purchased, all of them



Volunteer Penny Carlhian photographing and inventorying the CHS object collection.

valuable and enriching in their own way. The biggest donation this year was from the Wescott family and includes many linear feet of records, photographs, and objects. Early in 2022, we acquired the 1892 *Ship Castine* portrait by Basi Ivankovich, which now hangs in our reading room. Maine Maritime Academy provided two valuable donations, the first consisting of items retrieved from the Abbott House on Battle Avenue, and the second a multi-box collection of Eastern State Normal School records. An impressive array of 30 daguerreotypes and ambrotypes were donated by the Ames family, most depicting members of the Whiting and Whitney families. Noteworthy objects that we received include a typewriter once belonging to the poet Philip Booth, and the name board of the local steamship *Golden-Rod*. In keeping with current best practice, we also converted several long-term loans into gifts, including the copy portrait of the Baron de Saint Castin which hangs in our exhibit foyer.

Interns and volunteers have also continued to provide invaluable assistance. Our summer intern, Andrew Kendall, processed the entirety of the Wheeler family archives donated in 2021, and Simmons University student intern Olivia Zubrowski processed this year's donation of the Eastern State Normal School records from Maine Maritime Academy. Penny Carlhian has also begun to inventory and photograph our object collections using a lightbox, scale, and digital SLR camera. Gaining intellectual control over our object collections and eventually publicizing them online is a major goal of CHS going forward, and Penny's work is laying the foundation for this.

## Buildings and Grounds

### Value

We responsibly care for the historic and financial resources that have been entrusted to us, today and for future generations.

The Buildings and Grounds Committee takes its role seriously in caring for our two historic structures. Not only do they house our exhibits, offices, and collections storage, but they are two important historic properties that grace the Town Common. The committee works hard to care for the buildings and grounds so they will be here for future generations to enjoy.

2022 was a busy year for the Buildings and Grounds Committee, especially compared to the prior two years. Among the projects undertaken by the committee were preparing for the Clark Fitz-Gerald exhibition, continuing normal maintenance, installing memorial and honorary bricks in the walkway, and finally, planning for the 2023 season.

In late 2021, the Buildings and Grounds and Exhibits Committees came together with the staff to plan the work needed to design and install the 2022 Clark Fitz-Gerald exhibition. As a result, Building and Grounds was asked to build shelving, niches, and pedestals for the exhibition of the



Marc Pelletier and Bill Corbett creating the wall shelf unit for the Clark Fitz-Gerald exhibition.



Marc Pelletier and Charlie Pearce repainting the Abbott School doors.

Fitz-Gerald sculptures. Skilled and creative committee members not only built beautiful exhibition furniture, but helped CHS save a great deal of money.

In late winter and early spring, the committee spent many hours building a number of wood pedestals; these required quite a bit of effort to complete. Each pedestal was designed to accommodate

the dimensions of a specific sculpture. The pedestals were constructed in a workshop, painted, and installed. Volunteer Penny Carlhian then designed and made custom-fitted linen tops for each pedestal.

Space constraints in the Abbott School meant using ingenuity for how to install all the sculptures. One creative solution was that the committee developed a custom floating wall shelf designed to accommodate smaller sculptures with their accompanying exhibit labels and text. Committee members also enlarged an existing wall niche to exhibit one of Fitz-Gerald's religious sculptures. Once this construction work was complete, the committee painted the walls and pedestals using the graphic designer's chosen exhibition color scheme.

At the same time and to prepare for opening day, the committee tackled painting the two front doors of the Abbott School. In the process, it became apparent that the doors had, over the years, been improperly repaired using plywood. Looking ahead, the doors will be replaced - a project for the future.

With two historic structures to care for, there are always large projects awaiting work. The Grindle House exterior paint has reached its age limit, and we hope to begin a painting project in early 2023. Members of the committee met with painting contractors to obtain pricing options.

Early in 2022, a leak appeared in the attic of Abbott School, and the committee secured a roofing contractor who specializes in historic preservation work to make the needed repairs. This was done utilizing a boom lift; during the operation, a small number of minor roof repairs were made as well. Vigilance in maintaining the structures while staying within budget is challenging, but the committee is committed to continuing to do both.

### BUILDINGS AND GROUNDS Committee Members

Marc Pelletier, <i>chair</i>	Charlie Pearce
James Day	Steve Skillen
Ewen Farnham	Pedrick Sweet
Stephen Lieser	Susie Hatch, <i>ex officio</i>
Marcia Mason	Lisa Simpson Lutts, <i>staff</i>
Roger Moss	



# Community Partnerships

## Value

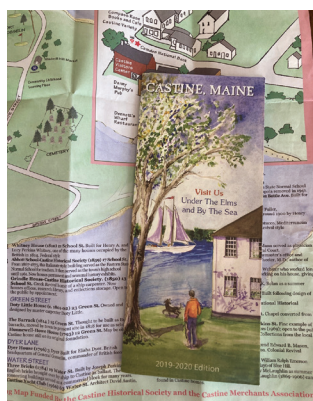
Inside and outside our walls, we build relationships among individuals, organizations, and the community to enhance understanding of our collective experiences.

Throughout the year, we strive to work with individuals, organizations, and the community to make Castine a special place to live and visit.

But with our small staff, we thoughtfully review what community projects we become involved in. Obviously, the projects we take on must fit our mission of teaching and preserving Castine's history. We also look at the project's community impact: will our involvement enhance Castine as a destination for visitors who will, in turn, visit our Historical Society? Here are a few of the community projects and organizations we were involved with in 2022.

### CASTINE MERCHANTS ASSOCIATION

Working with the Castine Merchants Association (CMA) has been a priority over the past two years. Our Executive Director, Lisa Simpson Lutts, served as secretary for CMA and is the newly elected president for 2023. CHS is particularly interested in working with CMA to keep the Visitor Center open and active. The Visitor Center, staffed by its director and volunteers, is located at the Town Docks. They greet



The popular Castine walking tour map.

tourists from throughout the world and help send these visitors to our shops, restaurants, and museums. We work closely with the Visitor Center to ensure that current information on CHS, our exhibits, and events are available. In our role on the board, we help advise the Visitor Center's marketing to bring more people to our town. This year, as in years past, CHS helped financially

underwrite the town Walking Tour Map. We are happy to support this community project that helps visitors learn about our town's fascinating history and architecture.

### WILSON MUSEUM

In 2022, we did a number of cooperative projects with the Wilson Museum. Throughout the year, we had meetings to discuss ways we can better work together. In October, our staffs bonded and learned together at the New England Museum Conference in Springfield, MA. Also in the fall, CHS participated in the Wilson Museum's "Experience Local History" program for 7th & 8th graders from the Adams, Brooksville, and Penobscot schools. We were thrilled to give the students historic tours of Fort George, helping to bring this important site to life for them. In November, the Wilson Museum and CHS co-sponsored an in-person and Zoom



Lisa Lutts giving tours of Fort George to area students.

lecture on Maine women's diaries. Finally, in early December we co-hosted the second annual Holiday Open House event between our two institutions, opening our doors to the community for a festive family-oriented evening of food, drinks, and fun.

### WITHERLE MEMORIAL LIBRARY

For the last several summers we have partnered with the library to host a small historical exhibition in their entryway case. In 2022, our intern, Andrew Kendall, processed our extensive Wheeler Family Collection donated to CHS by Sherry Culves. Andrew's work sparked his interest in an exhibition at the library on the published writing of several generations of the Wheelers. The resulting exhibition included historic photographs, first-edition books by the Wheelers, George Wheeler's Civil War papers, and even family baby shoes.



Witherle Memorial Library exhibit on the Wheeler family.

## Development

The Development Committee's goal is to ensure a sustainable financial future for CHS. The committee helps raise financial support that in turn helps the Historical Society provide valuable services to the community – including properly caring for our two historic buildings and permanent collection and educating the public through our exhibits, educational programs, and community events.

Organizing and implementing the Castine House & Garden Tour fell under this committee. However, it was Ruth Scheer as chair, with Lynne Dearborn and Mary Dearborn as vice-chairs, who organized the event. All three poured their hearts and souls into the tour, and thanks to their leadership, hard work, and creativity, the day was a resounding success. Teaming up with them were many dedicated committee members who chaired different aspects of this event, such as ticket sales, home floral decorations, signage, and shuttle transportation. Staff took on their own portions of the event including marketing, the House & Garden Tour web site, on-line ticket sales, and overseeing printing. Then on the day of the event over 100 volunteers were home hosts and shuttle drivers, while others sold tickets, ran the luncheon, and organized a pop-up gift shop.



House & Garden Tour volunteers prepare for the big day.



The 2022 Open House in June is organized by the Development Committee.

### Value

We responsibly care for the historic and financial resources that have been entrusted to us, today and for future generations.



Chair Ruth Scheer thanks individuals at the House & Garden Tour patron and sponsor event.

The 2022 House & Garden Tour was the most successful ever. Over 1,000 people came to Castine to enjoy both the tour and all Castine has to offer. Thanks to robust ticket sales—coupled with the very generous support of 129 patrons, sponsors, donors, and corporate sponsors—the event was a huge financial success as well. A portion of the proceeds are now in the CHS money market account for future large-scale projects, while the remainder helped meet annual general operating budget goals.

Besides fundraising events, the committee focused on three key areas of revenue support. This year, a record-breaking 42 new households joined as members, which brings the total number of member households to 391. These members are a geographically diverse group, consisting of year-round residents, summer residents, and people from throughout the United States, many of whom have past family ties to Castine. While membership dues are the backbone of CHS's income, the year-end Annual Appeal also provides significant financial support. Close to 30% of our members elect to give CHS a year-end gift in addition to their annual membership support. Other financial support includes people who purchase a memorial or honorary brick for the front walkways of the Abbott School and those who make memorial or honorarium donations.

The Abbott School gift shop and the online version are two other vital areas of revenue support. Visitors from around the country are looking for nice Castine-themed gifts to bring back from their travels. Locals love to shop with CHS to purchase unique hostess, birthday, and holiday gifts. During the winter, staff go to wholesale gift fairs to discover new vendors and products to carry that will be unique to CHS. Please remember members receive a 10% discount on their purchases.

### DEVELOPMENT Committee Members

Lisa Haugen, *chair*  
Lela Agnew  
Ellen Benjamin  
Penny Carlhian  
Mary Dearborn  
Anne Fuentes  
Susan Hatch  
Ruth Scheer  
*through August 2022*  
Lisa Simpson Lutts, *staff*



# 2022 Castine Historical Society Members

## LIFETIME

---

Virginia and Stan Bourne \*  
Cynthia Boyer  
Dona Brophy  
Paul Davis  
Leila and Jim Day \*  
Direxa Dearie  
Sandy and Will Dick \*  
Felicity and Mike Gillette  
Andrew Harig  
Vivian Harig  
Mrs. Francis W. Hatch \*  
Mark Honey  
Kathryn Jones  
Gunilla Kettis  
Charles King \*  
Barbara and Elliot Lindsley  
Kim and Conner Madison  
Donnamarie and Mark Mills \*  
Albert Myers  
Paul Myers  
Meg Ann Noah  
Robert B. Rettig \*  
Deborah Rice  
Jeryl Schriever and Alexander Huppé  
Arthur Wardwell  
Lucy Jane Webster\*  
Roxanne and Robert Webster  
Dr. and Mrs. Frank L. Wiswall, Jr.  
Brian Witherspoon

## NOAH BROOKS SOCIETY

---

Laura and Richard Ames \*  
Sally and Todd Fonner  
Marina and George Hatch \*  
Mary and Howard Lowell \*  
Darisse Paquette and Hans Strauch \*  
Trina and Fred Whitridge \*

## BENEFACTOR

---

Catherine and Christopher Abbate  
Carolyn and Morten Arntzen  
Ellie and Doug Benjamin \*  
Penny Carlhian and Marc Pelletier \*  
Mary Dearborn \*  
Bente Hartmann \*  
Marcia and Tom Mason \*  
Joan Netland \*  
Peg and Mac Patterson  
Louise and Peter Pincoffs \*  
Susan Walter and Jim Hubbard

## PATRON

---

Alice and Wallace Alston  
Maggie and Peter Begley  
Janis Bobb  
Roberta and Bruce Boczkiewicz  
Ruth and Peter Brooke \*  
Sarah and Bryan Carey \*  
Lory Childress  
Elaine Cinciva and Colin Baker  
Susanne and Ben Clark  
Roxanne and Kevin Coady \*

Jean di Sabatino and Louise Giugliano  
Linda Genereux and Timur Galen  
Susan and David Hatch \*  
Breeze and Skip Hobbs \*  
Karolyn Ide and Donald Austin \*  
Alan Kornberg and Harold Koda\*  
Shannon Light  
Melissa and Walt Linscott  
Dabney and Richardson McKenzie  
Virginia and Edward Miller, Jr.  
Dawn Mota and Shane Ward  
Liz and John Parish\*  
Julia and Brooke Parish  
Jean and Tom Pedersen \*  
Michelle and Ann Robinson  
Geraldine and Alan Schechter  
Dorothy Sherling  
Lee Smith and Hal Crowther \*  
Candace and Richard Stern  
Meredith and James Stuart-Smith  
Courtney and Randy Tilinski  
Melanie and Andy Twomey \*  
Ruth Anne and Bobby Vagt  
Betty and Mike Venson \*

## CONTRIBUTING

---

Karen Abbott and Richard Fisher \*  
Carol Adams and Rick Armstrong \*  
Elise and David Adams \*  
Susan Allen and Neil Middleton  
Tim Allison-Hatch  
Helen and Dick Anderson \*  
Alicia Anstead and Peter Davis\*  
Gracen and Tom Ashton  
Sandy and David Austin  
Linda Austin and Jeb Hallett  
Mary Bartlett  
Jill and Jamie Bicks  
Hilary and Edmund Billings  
Pat Bishop  
Gene and George Bland \*  
Posey and Bill Boicourt \*  
Beth and Mike Boucher\*  
Lynn and Ken Brown  
Bob Bruce  
Emerson Bruns and Nik Quaife  
Marianne and Bill Buchanan \*  
Derrick Cartwright  
Betsy and John Casteen III  
Kristen Caverly and Robert Campbell  
Sandy Clark and Ned Odegaard \*  
Patricia and James Conway  
Peggy and Bill Cooney  
Ceane and Bryan Corbett  
Michael Coughlin  
Claire and John Curtin III  
Lynne Dearborn \*  
Dianna Dunn and Donald Saunders  
Kate Dustin and Michael Mainen \*  
Jill and Terry Eastland  
Theresa Edwards  
Emily Eerdmans and Andrew McKeon  
Elaine and Allen Fernald  
Virginia Foote  
Monique and Eric Foster  
Mary Hull and Herbert Frazier

Philip Freedman \*  
Sam and Bob Friedlander \*  
Anne and Roland Fuentes \*  
Wendy and Donn Fullenweider  
Judy and Jim Gibbons  
Carmen Gillett and Bill Belmont  
Anne Gorman and Pete Musgrove  
Deborah A. Gribbon and Winston Alt  
Libby and Christopher Gros-Balthazard  
Hazel Hall  
Azita Hamedani and Peter Mason  
Sybil Hannah  
Lorrie and Charles Hart  
Jacqueline and Christopher Hasty  
Elizabeth and Whitney Hatch \*  
Ian Hatch  
Anne and Mark Hatch  
Lisa and Patrick Haugen  
Betsy and Jaik Henderson  
Beverly Henry \*  
Mason and John Hoeller \*  
Adeline and Myron Hofer  
Rose Honders  
Mary Ellen and Tanner Hunt  
Jill Jeffries and James Dearborn  
Jan M. and Gary T. Johnson  
Kerri-Ann Jones and Thomas Beck  
Karen and Doug Koos  
Marianne Lee and Wyllys Terry  
Betsy and Jason Libby  
Sue Loomis  
Claire Lovett  
Lisa Simpson Lutts and Dan Lutts \*  
Karen and William Lyons \*  
Lynda and Gordon MacArthur \*  
Elizabeth and Alan Macdonald  
Sue and Jack Macdonald  
Katie and John Mankiewicz  
Flora and Bob Marvin  
Carolyn Mathiasen  
Lucy and Tim McNeece  
Jane Mendelsohn and Nicholas Davis  
Helen H. Miller and James L. Kerr  
Diane and David Modesett  
Nancy Mundth \*  
Nan and Bill Newcomb  
Mary and Felton Norwood \*  
Sonja and Mike O'Donnell  
Ellyn Plato and John Boyer  
MaryB Rice-Whitemore  
Jordan and John Richards  
Sandra and Deane Richardson \*  
Debbie and Bruce Rogers  
Doris Russell \*  
Judith Sandven \*  
Elizabeth and Darin Schanker \*  
Amy Scott  
Lindsay and Phil Scott  
Shannon and Vincent Signorello  
Vanessa and Daniel Smith  
Georgeann and Parks Snead  
Janet Spector and Theodore Coladarci  
Sarah Tenney Stammen and Jeff Stammen  
Meg and Dick Taylor  
Catherine and David Tenney \*  
Brooke and Gil Tenney \*  
Peter Tenney

Lynn Wessel  
Anne and Roger Whidden  
Maurice Williams \*  
Elise and David Wilson \*  
Mary and Will Wilson \*  
Gail Winkler and Roger Moss  
Stefanie Scheer Young and Andrew Young

## FAMILY

Lela and David Agnew  
Dianne Allen-Pierce  
Tina and Bill Anthony\*  
Lynn and Jeb Baker  
Jane and Nat Ball  
Margaret Beckman and Christy Stout \*  
Karen and Jochen Bene  
Nancy and Bill Bennett  
Riva and Arnold Berleant  
Casey Bernard  
Elaine and Paul Bertrand \*  
Marian and David Bicks  
Brenda Black  
Starr Blackwood & Family  
Victoria and Temple Blackwood \*  
Stephanie and Robert Boenau  
Audrey Bogdonoff Cooper \*  
Bundy and Robert Boit  
Kathleen Bower \*  
Bill Bowick and David Bouffard  
Mark Brooks and Gus Dallas  
Laurie and Jim Butler  
Miriam and Charles Butts  
Alton Chelette \*  
Carol and John Clouse  
Thomas Collins  
Jane and Tom Coony  
Sarah Cox  
Connie Curtin and Peter Cooperdock  
Gregory and Jennifer DePardo  
Susie and Moss Diston  
Lorna Doran and Bruce Breimer  
Sara and Craig Fanning  
Susan and Paul Farmer  
Anne and Ewen Farnham  
Olivia and John Farr \*  
Elizabeth and Joe Fay  
Richard Fenton  
Angela and Andrew Fisher  
Janet and Will Fisher  
Judy and Doug Fitzsimmons \*  
Betsy Foote and Howell Jackson\*  
Sally Foote  
Laura and Paul Friedman  
JoAnne and Richard Fuerst  
Wendy and David Fuller  
Mickey and Aaron Gast  
Betty and Roger Gilmore  
Sue and Jimmy Goodson  
Julia Gray \*  
Dixie and Paul Gray \*  
Barbara Griffiths and David Schoonover  
Barbara Grover \*  
Mary Hall  
Andrea Hatch  
Eliza Hatch and Ian Jessen  
Kay and Richard Hightower

Suzan Holmes-Newton and Russell Newton \*  
Laura and Kevin Hopkins \*  
Katherine F. and Richard J. Howland  
Reta and Guy Hunter  
Leah and Carl Jacobs  
Susan James and Mark Fenton  
Julie Roy Jeffrey and Chris Jeffrey \*  
Leigh and Jay T. Kearney \*  
Susan and Bill Kennedy  
Cynthia and Alvion Kimball  
W. Scott Klinger  
Ulla Kopp and Jerry DiBona \*  
Ted Lameyer  
Emily and Richard Law  
Lisa and Jim Lawsing  
Vicky and Fran Lee  
Charlotte and John Legg  
Lois and Walter Licht \*  
Jennifer and Gary Lieberman  
Maura and Bruce Lundie  
Lauri and Doug Lyman  
Sasha and Paul Macomber  
Peggy and Roger Marks \*  
Nancy Marto and Thomas Adams  
Ashleigh and Bricken McKenzie  
Hope and John McNally  
Ann Miller \*  
Bonnie and David Miller  
Maggie and John Mitchell \*  
Catherine and Brockett Muir  
Bridget Murnaghan and Hugh Gordon  
Kate and Jon Noel  
Cinnie and Lip Norvell, Jr.  
Judy and Kip Oberting  
Peggy O'Neil-Murphy and Walter Murphy \*  
Debbie and John Packard  
Greer and Charlie Pearce  
Bonnie and Anthony Politano  
Pamela Pollak and Gene Fignar  
Joy Pott \*  
Jean and Carlos Quijano  
Patricia Rappazzo and Dwight Boerem  
Jeanmarie Reed  
Stephen Reid  
Frank Richardson  
Marguerite Rodgers  
Leigh and Peter Roessiger  
Kelly and Mark Sawyer \*  
Ruth and Ken Scheer \*  
Don Schmidt \*  
Ina Schonberg  
Jill Schoof and Rodney Flora  
Janet and James Shanley \*  
Jane and Steve Shea  
Shelley and Donald Small  
Walter Smalling and Ray Rhinehart  
Elaine Smith  
John Speridakos  
Eve and Albert Stwertka  
Johanna and Pedrick Sweet  
Betsy Tarlin and Marcos Rosenbaum  
Brad Tenney  
Marty and Don Tenney \*  
Christine and Steven Tenney  
Carol and Douglas Tinney  
Mary Tobey  
Penelope Tonry

Tom Troeschel and Loi Thai  
Peter Vogell  
Laurence Wade  
Elizabeth Wagner, Ross Zucker  
and Sarah A. Zucker  
Pat Wardwell  
Margaret Woolley  
Rosemary and David Wyman  
David Ziff and Alan Bell \*  
Pat and John Zoller

## FRIEND

Linda and Dale Abernathy	Marie Kaden *
Susan and Josh Adam *	Pam Keeseey
Robert Allen *	Mary C. Kneisel
Ryan Armstrong	Allen Kratz
Jane Bagot	Betsy and Steve Lieser
Mark Berghash *	Jerome Magnifico
Karin Bos	Mary Claire Mari
Sharon Bray	Lillian Martin
Cameron Brien	Elizabeth Miller
John Broadwell	Jean Miller
Helen Brown	Danielle Mutty *
Wayne Chadburn *	Deborah Neve *
Barbara Cooper	Rosemary Pierce *
Jane Guild Cutter	Carolyn Punzelt *
Diana Dabby *	Gretchen Raber
Joan and Jim Darby	Anette Rodrigues*
John Dearborn	Susan Ruch
James Dillon	Jane Saltsman
Sylvia DiNello	Valerie Scott
Elsie Freeman	John Sedgewick
David Furlow	Serena R. Smith
Brittany	Claudia Teitelbaum
and Christopher Goetting	Del Thomas
Courtney and Brad Hamlin	Carolyn
Susan Hazlett	and Charles Ulrich *
Patricia Hill	Lindsey Vagt
Sally Hoople	Jane Warker
Elizabeth Hotchkiss	Alison West
Beverly Howard	George Whitridge
Barbara Jackson *	Charleen Wiseman
Jon Jewett	

## BUSINESS PARTNERS

Bangor Savings Bank  
Cheryl L. Boulet, CPA  
Cross Spruce Antiques  
Down East Landscape and Design  
E. L. Shea Builders and Engineers  
Eaton Peabody, Attorneys at Law  
Furbush Roberts Printing Inc. \*  
HMMV LLC  
Homelight  
Mainescape Garden Shop  
Merle B. Grindle Agency  
Saltmeadow Properties  
Seal Cove Boatyard, Inc.  
Vance Gray Wealth Management  
Wallace Interiors





# In Memory

In 2022 the Castine Historical Society lost a number of valued members whose contributions of time and talent helped shape our organization. While space does not let us pay tribute to everyone who passed away, we felt we should mention one person whose contributions to the Historical Society were and continue to be significant.

Dr. Lynn H. Parsons' impact on the Historical Society has been immense and far reaching. When Lynn and his wife, Anne, retired full-time to Castine in 2005, they immersed themselves in volunteer work for the Historical Society. While this was a natural fit for both of them, it especially was for Lynn, who taught American history for over 40 years, mainly at the State University of New York in Brockport.

From 2007 - 2013, Lynn served on our Board of Directors. During his tenure, he was responsible for organizing the annual Deborah Pulliam Memorial Lectures. Through his work in the field, Lynn knew many top-notch historians whom he invited to give Pulliam lectures.

Lynn also was an accomplished author who shared his expertise with CHS. He wrote 19 scholarly articles on Castine's history for our newsletter, *The Castine Visitor*. His articles ranged from the history of the Backshore swimming pool to a biography of Castine's congressman, Isaac Parker, to a history of the Castine Historical Society. In our view, his most important articles dealt with two of the town's historic signs. Through careful scholarship and analysis, Lynn uncovered the accurate history behind the events featured in the signs in well-written and reasoned articles.\* Between 2008 – 2013 Lynn and Anne also served as co-editors of *The Castine Visitor*, bringing scholarly and critical eyes to our well-loved newsletter.

As if all this wasn't enough, Lynn researched and helped curate CHS's 2013 exhibit "Missions and Meeting Houses, Chapels, and Churches." To accompany the exhibition, he wrote a book by the same title that covers Castine's long ecclesiastical history. Lynn's writing even included plays. In 2015 CHS presented the first act of his play, "The Tye More Binding" based on letters between John and Abigail Adams. Lynn was, indeed, a true Renaissance man.

The Historical Society and the Castine community were fortunate to be the recipients of Lynn's talents, passion, and love of American and Castine history. He is greatly missed, along with all those members who passed away in 2022.

\* To view any of these articles, visit [castinehistoricalsociety.org](http://castinehistoricalsociety.org). Go to the "About Us" drop down menu and look for The Castine Visitor link.



Lynn Parsons signing copies of his book at the exhibit opening.



Lynn Parsons served as advisor to the *Missions and Meeting Houses, Chapels and Churches* exhibition in 2013.

## IN MEMORIAM

Carol Allen  
Virginia Beers  
John Bobb  
Margaret Booth  
Berna Kaiserian  
Par Kettis  
William Lovett  
Dr. Lynn H. Parsons  
Donald Pierce  
Ted Van Leer  
Jonathan Weinstein

# Financials

**Value** | We responsibly care for the financial resources that have been entrusted to us, today and for future generations.

The Historical Society strives to create a balanced revenue stream consisting of income from the interest on the Historical Society's endowments, as well as increased member and donor engagement, earned income, business sponsorships, creative fundraising initiatives, and grant writing.

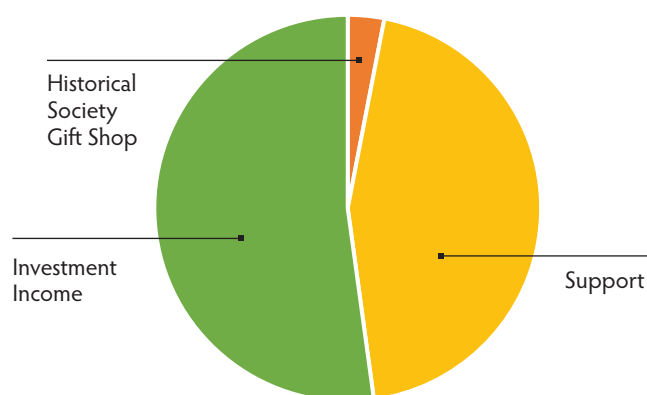
Below is a comparison of 2022 vs. 2021 revenue and expense showing in broad categories how we spend our income and from where this income is derived. As always, we welcome questions from our members about our finances.

## FINANCE Committee Members

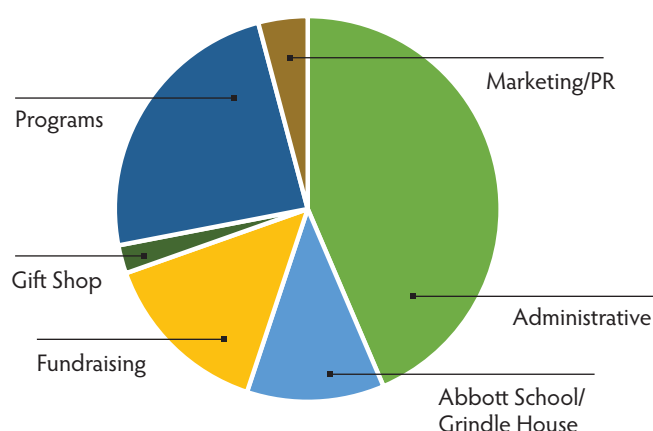
John Mitchell,  
*treasurer and committee chair*  
William Buchanan  
Ellen Benjamin

Susie Hatch  
Ruth Scheer  
Steven Tenney  
Lisa Simpson Lutts, *staff*

## 2022 REVENUE



## 2022 EXPENSES



## 2021 REVENUE

Historical Society Gift Shop	15,640.00
Support	103,214.00
Investment Income	239,917.00
Grant income	11,000.00

**Total Support & Revenue \$369,771.00**

## 2022 REVENUE

Historical Society Gift Shop	14,031.00
Support	206,448.00
Investment Income	240,500.00
Grant income	n/a

**Total Support & Revenue \$461,019.00**

## 2021 EXPENSES

Marketing/Public Relations	13,398.00
Fundraising	8,016.00
Abbott School/Grindle House	35,193.00
Programs	98,684.00
Administrative	180,619.00
Gift Shop	9,903.00

**Total Operating Expenses \$345,813.00**

## 2022 EXPENSES

Marketing/Public Relations	17,514.00
Fundraising	61,381.00
Abbott School/Grindle House	48,812.00
Programs	101,184.00
Administrative	184,543.00
Gift Shop	10,076.00

**Total Operating Expenses \$423,510.00**





Castine Historical Society

P.O. Box 238 • Castine, Maine 04421

Non Profit Org  
US Postage  
PAID  
Permit # 76  
Bangor, ME



Castine Historical Society

## 2022 STATISTICS – A RECORD-BREAKING YEAR!



**391**  
MEMBERS

**42**  
NEW  
MEMBERS



199  
VOLUNTEERS

**1,628**  
FACEBOOK  
FRIENDS

**1,026**  
E-BLAST  
SUBSCRIBERS



Thank you for your support!



Clark Fitz-Gerald installing his Virgin Mary sculpture at St. Mary's Church, Bangor, 1989. Castine Historical Society, donated by Cynthia Boyer.